

you can
Canon

iR C3200N
business intelligence

*Experience exceptional colour
performance and excellence*





Innovation everywhere... enhancing quality, ease and cost effectiveness

Colour is critical to successful business communication. Yet it requires intelligent use of colour throughout your company to make sound financial sense. This can be achieved by enhancing output quality. Ensuring networked ease. Providing professional finishing capabilities. And, crucially, enabling strict control of colour costs at every level.

The innovative iR C3200N networked colour printer/copier fulfils all these expectations... and more. Thanks to Canon's industry-leading expertise, it utilises highly advanced technologies to your advantage. Intelligent and unique colour communication capabilities allow you to manage and distribute colour material over your existing networks. Thus optimising efficiency and reducing forwarding, filing and paper costs.



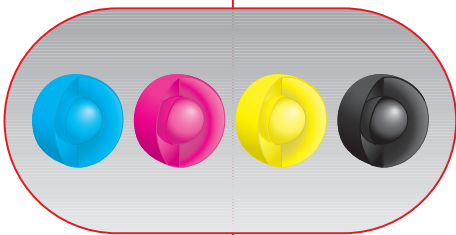


PRINT-READY PRODUCTIVITY

The iR C3200N comes complete with a Canon developed embedded print controller, to provide standard network printing for the most demanding users. Speed is a rapid 32 ppm for both full colour and black-and-white A4 output.



PCL/PS printing is supported, and UFR (Ultra Fast Rendering) for maximum print performance in the Windows environment. Plus RIP-while-print ensures optimum processing speeds. Also rapid 'stackless' duplexing at 27 ipm (A4) adds to overall productivity, while reducing paper costs.



OUTSTANDING COLOUR QUALITY

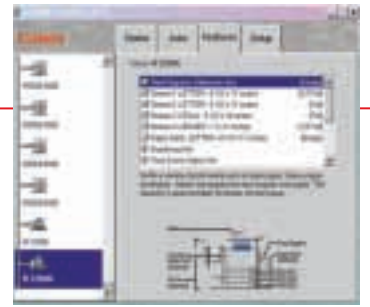
At last, colour print quality has a superior look and feel - with professional, matt finish prints. This is achieved by Canon's unique spherical enhanced-polymer, 'S toner'. Oil-less fixing ensures the highest quality with optimal gloss value, complete with an extended colour gamut volume. Print resolution reaches right up to a 2,400 dpi equivalent x 600 dpi, with 256-colour gradation. Delivering accurate and consistent colour where and when you want - throughout your entire enterprise.

PROFESSIONAL PRINT AND COPY COLOUR OUTPUT

Extensive finishing capabilities provide sophisticated output for all your work. A variety of paper media, sizes and weights can be handled - mixing both colour and monochrome output. Full bleed for pages including covers, with folding and saddle stitching, provides professional booklet production. Finishing can even be carried out in-line. All so you can create exciting and eye-catching documents in-house, at reduced cost.

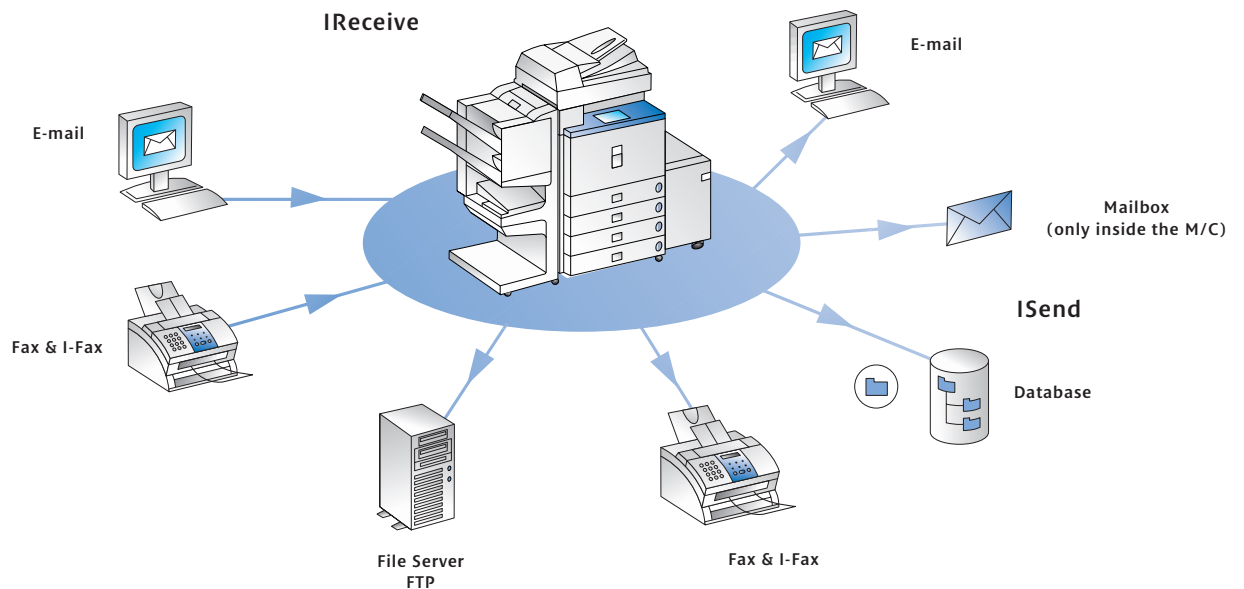
'WE FIT, YOU FORGET' SIMPLICITY

The iR C3200N is fully configured to adapt to all topologies seamlessly. We set it up to suit your system, you simply enjoy the ease and efficiency. Operating the device itself is equally simple. A large-format, touch panel display screen provides a clear menu configuration for intuitive operation. A preview function allows you to trim, crop and mark images directly on the UI screen using a stylus. Also the standard remote user interface with a built-in web browser function gives users complete control from all connected desktops.



Imagine the efficiency of intelligent networked colour communication

What makes the innovative iR C3200N truly unique is a range of intelligent, networked features that are ready to revolutionise the way you work. You benefit from a highly effective central communication hub - that combines scan, print, copy and distribution functions, working together concurrently. This allows you to collect, share, store and manage all your documentation directly over your network. Saving time, streamlining communication and greatly reducing hard copy costs.





COMBINING COLOUR INPUT FROM DIFFERENT SOURCES

Creating colour documents from a variety of sources has never been easier. You can scan hard copy documents into your system and then combine this with PC data from your favourite programmes (Excel, PowerPoint, etc). What makes it possible is a standard 40 GB hard disk providing up to 100 mailboxes - fulfilling the role of a Personal Image Server, with secure print functionality. Each user can be allocated a mailbox for temporarily storing, editing and managing high capacity colour data. Allowing them to store, share and work on documents - right through to finishing.

INTELLIGENT COLOUR SENDING AND DOCUMENT DISTRIBUTION

Sending colour documents to multiple destinations, in a single operation, is equally simple. Once scanned into the system, they can be distributed digitally. This includes sending to individual email addresses, a specific database (via a 'hot' folder) or to a file server for storage or forwarding on to recipients. Thus eliminating the cost of distributing had copy documents - to save time money and space. Canon's unique colour scan file compression mode is available so heavy file sizes won't congest your network. Plus LDAP (Lightweight Directory Access Protocol) support allows you to access all your company email address - saving more time and preventing the risk of address errors.

RECEIVING AND ROUTING COLOUR THROUGHOUT YOUR ENTERPRISE

The iR C3200N is also capable of receiving and routing all incoming electronic colour information to your organisation. It can then be captured, shared and easily worked on by all authorised users on the network. This enables workgroups to communicate and manage information more efficiently, flexibly and far faster than previously. All in an ingenious way - that has never been possible before with colour documentation.

MANAGE IT ALL EASILY AT EVERY CONNECTED DESKTOP

Users can access the iR C3200N direct from their desktop workstations - via the remote user interface with web browser function -to check on machine status and change the settings. Also password-protected personal mailboxes can be accessed via the Personal Image Server, allowing users to share, work on and distribute colour documents securely. Even complicated operations can be performed with ease, without special training or software.

SMART, MONEY-SAVING SOLUTIONS

Overall systems administration is vital to control costs and streamline operations. This is where Canon's renowned business intelligence skills come into play, ensuring that you can manage your workflow and costs far more effectively. We provide you with a wide range of software and service solutions, designed to meet your specific applications and needs. The end result is a fully integrated document, print and network management system that serves all your colour requirements in the most competent and cost-effective way.



Unlimited applications to meet and exceed your toughest demands

The iR C3200N brings fresh colour impact and a professional finish to your presentations, business proposals, financial reports and other colour work. At the same time, it opens up an exciting range of new colour opportunities. You can create more sophisticated work with ease. Distribute all your colour information instantly. And stay well ahead of the competition in every aspect of colour communication.

CAN I GIVE MY BUSINESS MORE STAND OUT?

Certainly. High quality, professional looking documents give you added impact. Documents that you'd normally outsource can now be run off internally; saving you time and costs - while also increasing your flexibility when it comes to those all important updates or changes.

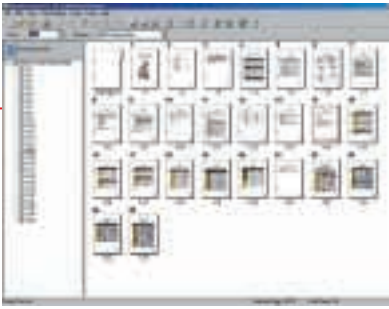
CAN I INTEGRATE MY HARDCOPY AND ELECTRONIC DOCUMENTS

The iR C3200N handles both mediums expertly. Existing hard copies can be scanned for copying or distribution, while electronic documents are easily merged and printed. Delivery for colour as well as monochrome output is a fast 32 ppm, with mixed output for finishing.

DOESN'T SENDING COLOUR FILES SLOW DOWN MY NETWORK?

Colour files are data heavy. That's why Canon incorporated a special colour scan file compression feature in the iR C3200N. This allows you distribute colour work enterprise-wide and worldwide - without overburdening your network.





ISN'T IT ALL TOO TECHNICAL
FOR MOST OF MY STAFF?

Not at all. Simply by using their existing internet and network capabilities, office staff will be able to manage even the most complex tasks with ease. Of course, Canon offer training sessions if required - but specific IT skills are not necessary.

IS SERVICING READILY AVAILABLE?

You benefit from full support, with local and dedicated technical servicing at hand for maximum uptime. E-maintenance is also available as an option. This pro-active service provides remote diagnostics, giving security and complete servicing control.

CAN I CONTROL COLOUR COSTS
RIGHT ACROSS THE BOARD?

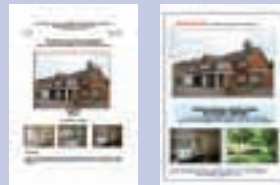
Every aspect of the iR C3200N is designed to increase efficiency while cutting costs - especially with intelligent colour communication reducing the need hard copy output. This is supplemented by Document Accounting software as well as Canon's consultancy expertise - ensuring strict and effective control of your budget.



**FLYERS/
ANNOUNCEMENTS**



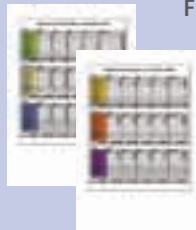
PRESENTATIONS



PROPOSALS



**CHARTS/GRAPHS/
FINANCIAL REPORTS**



SPREADSHEETS



**SADDLE-STITCHED
BOOKLETS**

iR C3200N Specifications

Type	Colour Digital Multifunction Imaging System
Imaging System	Laser Dry Electrostatic Transfer
Developing System	Dry Ni Component System
Fixing System	Heat Roller Fixation System
CPU	MIPS R4000, 250MHz x 2
Image Server Memory	Standard 768MB, 40GB HDD
Interface	Standard Ethernet (100BASE-TX / 10BASE-T) Optional USB 2.0 (Full speed mode)
First-copy Time	9.8 sec. B&W 13.1 sec. Full Colour
Warm-up Time	Approx. 6 min.
Originals	Sheets, books and solid objects (Up to 2Kg)
Maximum Original Size	A3
Copy Sizes	A5R - 305 x 457 Manual A5R - SRA3
Image Server	40GB
Mail Boxes	Support for Max 100 Mail boxes
Copy Reservation	5 Jobs
Resolution	600 x 600dpi
Scanning	600 x 600dpi equivalent (colour & b/w)
Copying	Printing: 2400 equivalent x 600dpi (colour & b/w)
Printing	256 Gradations
Halftone	Automatic Exposure/Manual
Density Adjustment	
Engine Speeds	
A4	32ppm full colour and b&w
A3	16ppm full colour and b&w
Duplexing	Standard automatic stackless
Magnification	
Standard Mode	100%
Preset Reduction	25%, 50%, 61%, 70%, 81%, 86%
Preset Enlargement	115%, 122%, 141%, 200%, 400%
Zoom Mode	25% - 400% (in 1% increments)
Multiple Copies/Prints	1 to 999
Paper Supply	
Standard	Dual 550-sheet Paper Cassettes (1100 Sheets) Stack Bypass (100 Sheets)
Optional	Dual 550-sheet Paper Cassettes (1100 Sheets) Paper Deck - 2,500
Paper Weights	Max. Total = 5,000 Sheets 64 to 209 g/m ² (Cassettes) 64 to 253 g/m ² (Manual)
Dimensions	799mm x 620mm x 786mm
Weight	126kg
Power Requirements	240V, 15A, 50Hz/60Hz
Multi PDL Network Printing (Standard)	
Print Speed	32ppm full colour and b&w A4 16ppm full colour and b&w A3 With duplex and full finishing available
Print Size	A5R - SRA3
PDL Support	PCL5c, PostScript 3 Emulation and UFR
Memory	Standard 768MB
Hard Disk	40GB (standard image server)
CPU	MIPS R4000, 250MHz x 2
Fonts	136 PostScript® Fonts, Barcode
Network OS	Windows® 95/98/ME/NT4.0/2000/XP, Mac OS9.0, Mac OS X
Network Communication Interface (Standard)	
Topology	Ethernet 100BASE-TX/10Base-T, Token Ring (optional)
Protocol	IPX/SPX (NDS, Binary, NDPS) TCP/IP (Port 9100, LPD, IPP11) Appletalk (PAP)
Colour Universal Send Kit - A1 (Optional)	
Preview	Multipage document preview function
Access	Single Sign On (Windows 2000 Server), Single Device Log-In (SDL)
Sending Methods	e-Mail, iW Document Manager to Server (FTP,SMB,NCP)
Address Book	LDAP and Ad Hoc entry and storage
File Format	Single page TIFF, multi-page TIFF, PDF, Multi page PDF
Sending Sizes	A5 - A3
DADF-K1 (Optional)	
Original Sizes	A5 - A3
Original Weights	52 - 105 g/m ²
Original Capacity	30 sheets (A4) 15 sheets (A3)
Dimensions (H x W x D)	165mm x 580mm x 506mm
Weight	13kg
Colour Image Reader-C1 (Optional)	
Interface	Ethernet (100BASE-TX/10BASE-T)
Scanning Resolution	75 - 600dpi
Smoothing	Super Smoothing Technology
Power Consumption	1.5kw max.
Scanning Area	Up to A3
Driver	Network Twain
Dimensions (H x W x D)	90mm x 585mm x 540mm
Weight	13.5kg

Cassette Feeding Unit-X1 (Optional)	
Number of Drawers	2x Front-loading adjustable drawers
Paper Capacity	2x550 sheets 80 g/m ²
Acceptable Paper Weights	64 - 209 g/m ²
Dimensions (H x W x D)	312mm x 620mm x 705mm
Weight	30kg
Saddle Finisher-N2 (Optional)	
Number of trays	Three
Tray Capacity	1,000 Sheets per tray (A4, B5, A5R) 500 Sheets (A3, B4, A4R, B5R)
Staple Position	Multiposition Stapling (1) Top Corner (2) Side Margin (3) Saddle-stitch
Stapling Capacity	50 Sheets (A4) 15 Sheets Saddle-stitched (A4, A3)
Saddle-stitch Specifications	
Paper Sizes	B4, A4R, A3
Paper Weight	64 to 105 g/m ²
	64 to 253 g/m ² (Cover only)
Stapling Capacity	15 Sheets (60 pages)
Folding	V-folding Standard
Dimensions (H x W x D)	1066mm x 682mm x 615mm
Weight	57kg
Finisher-N1 (Optional)	
Number of Trays	Two
Acceptable Paper Sizes	A5R to A3
Acceptable Paper Weights	64 to 253 g/m ²
Max. Capacity	1,000 Sheets per tray (A4, B5, A5R) 500 Sheets per tray (A3, B4, A4R, B5R)
Staple Positions	1 - any corner 2 - side margin
Staple Capability	50 Sheets (A4) 30 Sheets (A3)
Weight	37kg
Stapler Sorter-M1 (Optional)	
Number of Trays	One
Acceptable Paper Sizes	A5R - A3
Acceptable Paper Weights	64 - 253 g/m ²
Max. Capacity	1,000 Sheets (A4) 500 Sheets (A3) 30 Sheets (A4) 15 Sheets (A3)
Staple Mode	
Dimensions (H x W x D)	362mm x 574mm x 553mm
Weight	18kg
Paper Deck-P1 (Optional)	
Copy Size	A4, B5
Paper Weights	64 - 209 g/m ²
Capacity	2,500 sheets
Dimensions (H x W x D)	432mm x 324mm x 591mm
Weight	30kg
Super-G3 Fax Board-M1 (Optional)	
Applicable Line	Public Switched Telephone Network (PSTN)
Connection Lines	One
Transmission Time	ECM-MMR Approx. 3 seconds per page** (@33,600Kbps)
Compression System	MMR, MR, MH, JBIG
Sending Sizes	A5R to A3
Auto Dial Functions	Address Book: 1800 Destinations (Total)
Image Memory	Approx. 3,700 pages
Max. Confidential Fax Inboxes	100
Pedestal-C1 (Optional)	
Dimensions (H x W x D)	312mm x 620mm x 705mm
Weight	24kg
Accessories	
Colour Universal Send Kit A1, Image Reader-C1, Feeder DADF-K1, Cassette Feeding Unit X1, Saddle Finisher N2, Finisher N1, Stapler/Sorter M1, Paper Deck-P1, Plain Pedestal-C1, Super-G3 Fax Board M1, Copy Tray-H1, Document Tray-J1, FL Cassette X1, Key Switch Unit A1, Copy Tray H1, Card Reader D1, iR Security Kit A1, Token Ring Network Card, USB I/F Board	
***Approximate 3-second-per-page fax transmission time based on ITU-T No.1 Chart (MMR, Standard Mode) at 33.6 Kbps modem speed when transmitting to another v.34 machine. The Public Switched Telephone Network (PSTN) currently supports 28.8 Kbps modem speeds or lower, depending on telephone line conditions.	

you can
Canon

Canon Inc.
30-2, Shimomaruko 3-Chome, Ohta-ku,
Tokyo 146-8501, Japan
www.canon.com

Europe, Africa and Middle East
Canon Europa N.V.
P.O. Box 2262, 1180 EG Amstelveen,
the Netherlands
www.canon-europe.com



English Edition 0036W856
© Canon Europa N.V., 2003 (0603)

™ All company and/or product names are trademarks and/or registered trademarks of their respective manufacturers in their markets and/or countries. Canon reserves the right to change specifications without notice.